



Azərbaycan Memarlıq və
İnşaat Universiteti

THE ARCHITECTURE OF BAKU SUBWAY STATIONS

Nargiz Abdullayeva

Doctor of architecture



Design of halls which are based on post-and-beam system



Constructive scheme of shallow stations



Central hall of "Khalglar dostlugu" station

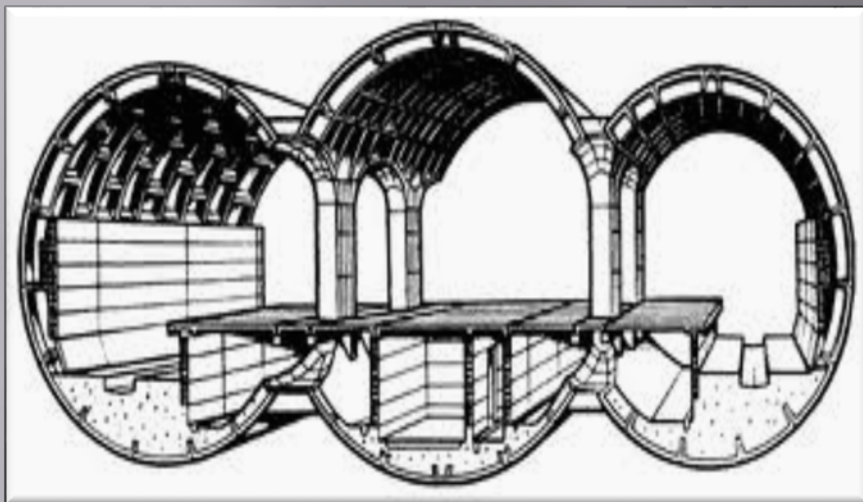


Hall and platform of "Ulduz" station



Central hall of "Ahmedly" station

Design of halls which are based on arched structure



Constructive scheme of the deep stations



Central hall of "Elmler Akademiyasi" station



Central hall of "Khatai" station



The platform of "Jafar Jabbarly" station

“Bakmil” station



“Icherisheher” station of Baku subway

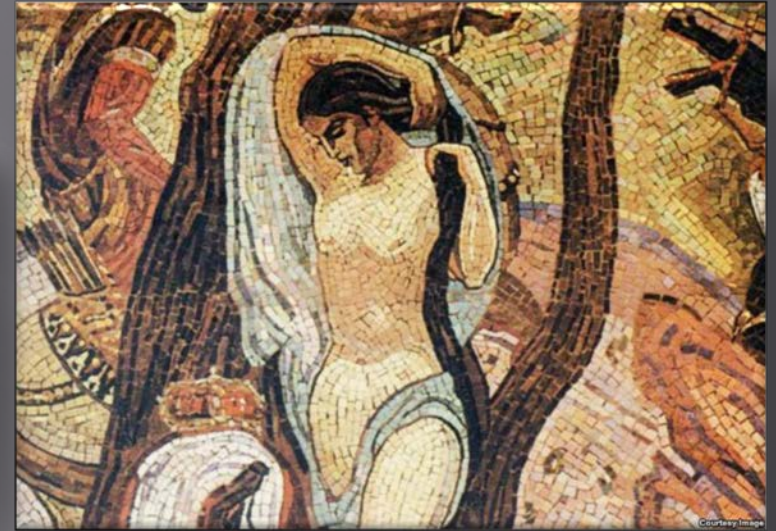
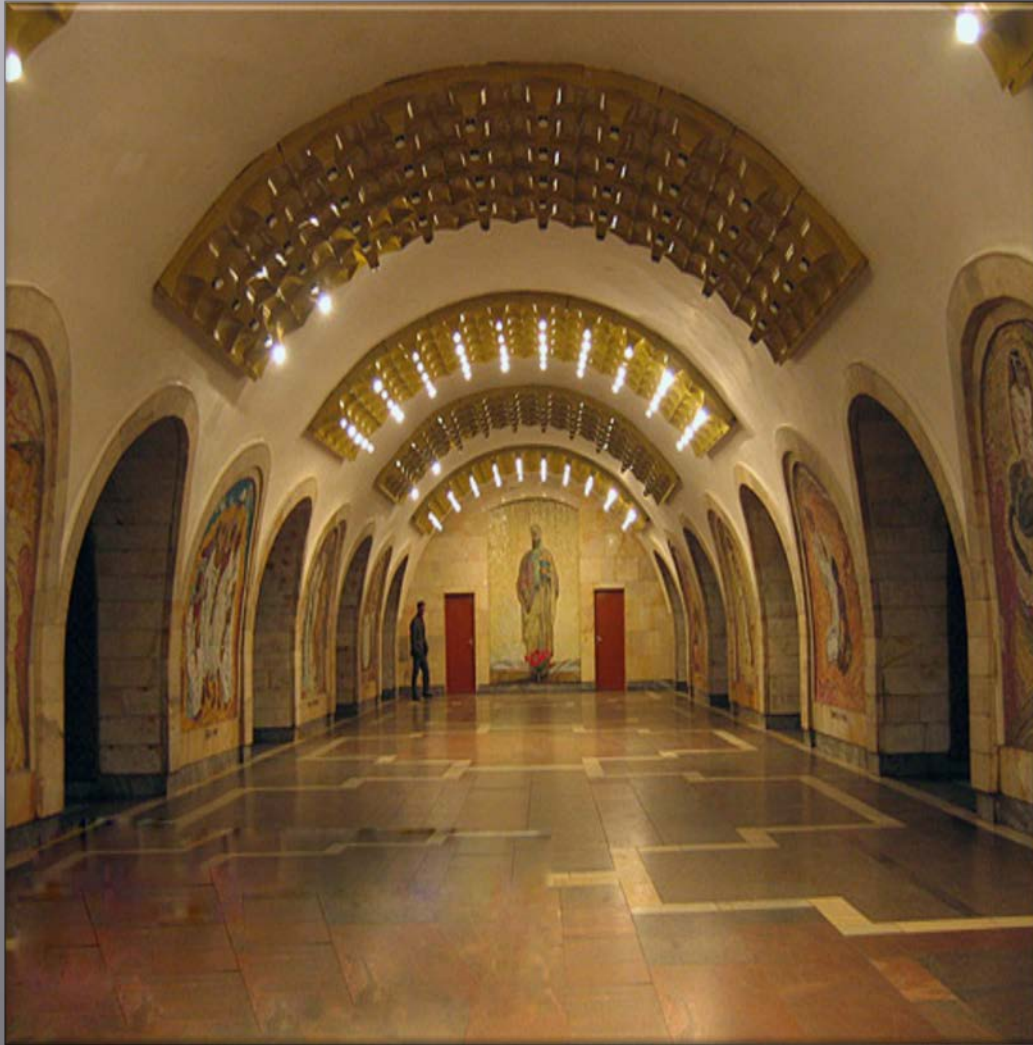
Before reconstruction

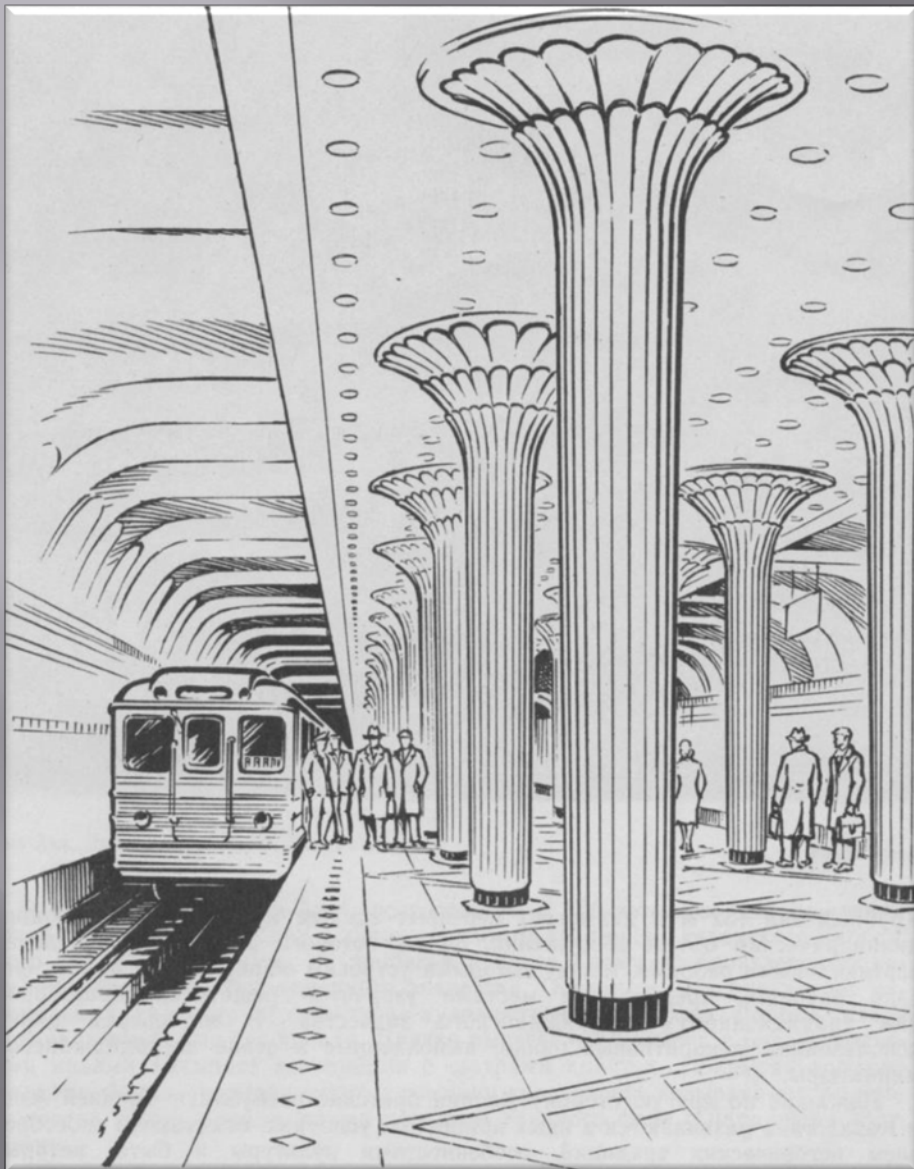


After reconstruction



Decorating of "Nizami" station





The platform of “Nariman Narimanov” station sketch of academician M.Useinov



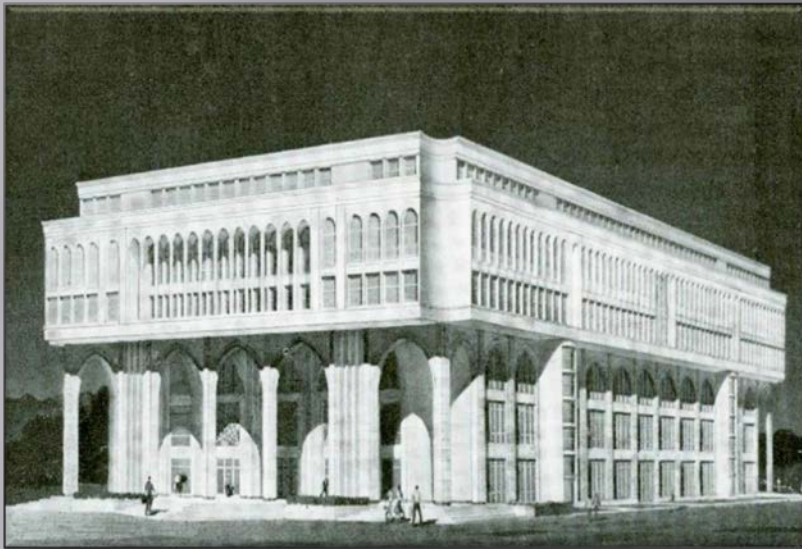
Design of columns of “Nizami” station



Design of columns of “Genjlik” station

Architectural design of "Nasimi" station





Overground lobbies of “Elmler Akademiyasi” station



Overground lobbies of “Nizami” station



Overground lobbies of “Khatai” station



Overground lobbies of “Memar Adjemy” station

Design of "28th May" station



Thank you for your attention!